



E&V ID W-046E58

IBIZA

## Exclusive Seafront Luxury Apartment

TOTAL SURFACE

approx. 130 m<sup>2</sup>

NUMBER OF BEDROOMS

2

TERRACE SIZE

approx. 30 m<sup>2</sup>

ASKING PRICE

€2,950,000



# Property Details

Total Surface	Terrace Size	Number of Bedrooms
approx. 130 m <sup>2</sup>	approx. 30 m <sup>2</sup>	2
Asking price	Total Number of Bathrooms	Garden
€2,950,000	2	✓
Air-Condition	Heating	Views
Central Air-conditioned	Heat Pump (Air-Condition, Underfloor Heating)	Water View, Open View, Beach Front View
Year of construction	Heated communal pool	Estimated completion in 5 months
2025	✓	✓

# Commission Text

Availability upon agreement.  
Engel & Völkers does not accept responsibility as the information provided in this brochure is for information only and it is subject to errors, omissions, change of price or withdrawal without notice.

Taxes, notary and registry fees must be paid by purchaser, the commission to E&V paid by the seller as stipulated by Spanish regulations.



## Property Description

Exclusive luxury ground floor apartment in an incomparable new development on the seafront. This unique residence redefines sophisticated living, featuring top-quality materials and a contemporary design that emphasises space, natural light and seamless connection with the surroundings.

The property offers two spacious bedroom suites with private bathrooms and direct access to the garden, as well as a generous open-plan living and dining area with a designer kitchen, fully equipped and opening onto the terrace. It also includes a guest toilet and a practical laundry room.

Finishes are of the highest standard, with underfloor heating

ensuring year-round comfort. Outside, the large private garden and terraces open directly to the sea, offering unparalleled views and absolute privacy.

The exclusive communal area of the building features an impressive heated pool and high-level services, completing a truly exceptional residential experience. The property also comes with a private parking space within the building.

An extraordinary opportunity to live on the seafront with all the luxury, comfort and elegance demanded by the most refined lifestyles.



## Location Description

Playa d'en Bossa is one of Ibiza's most dynamic and sought-after areas, renowned for its prime location and vibrant lifestyle. Just minutes from the city centre and the airport, it offers the perfect combination of convenience, leisure, and direct access to one of the island's longest and most iconic beaches.

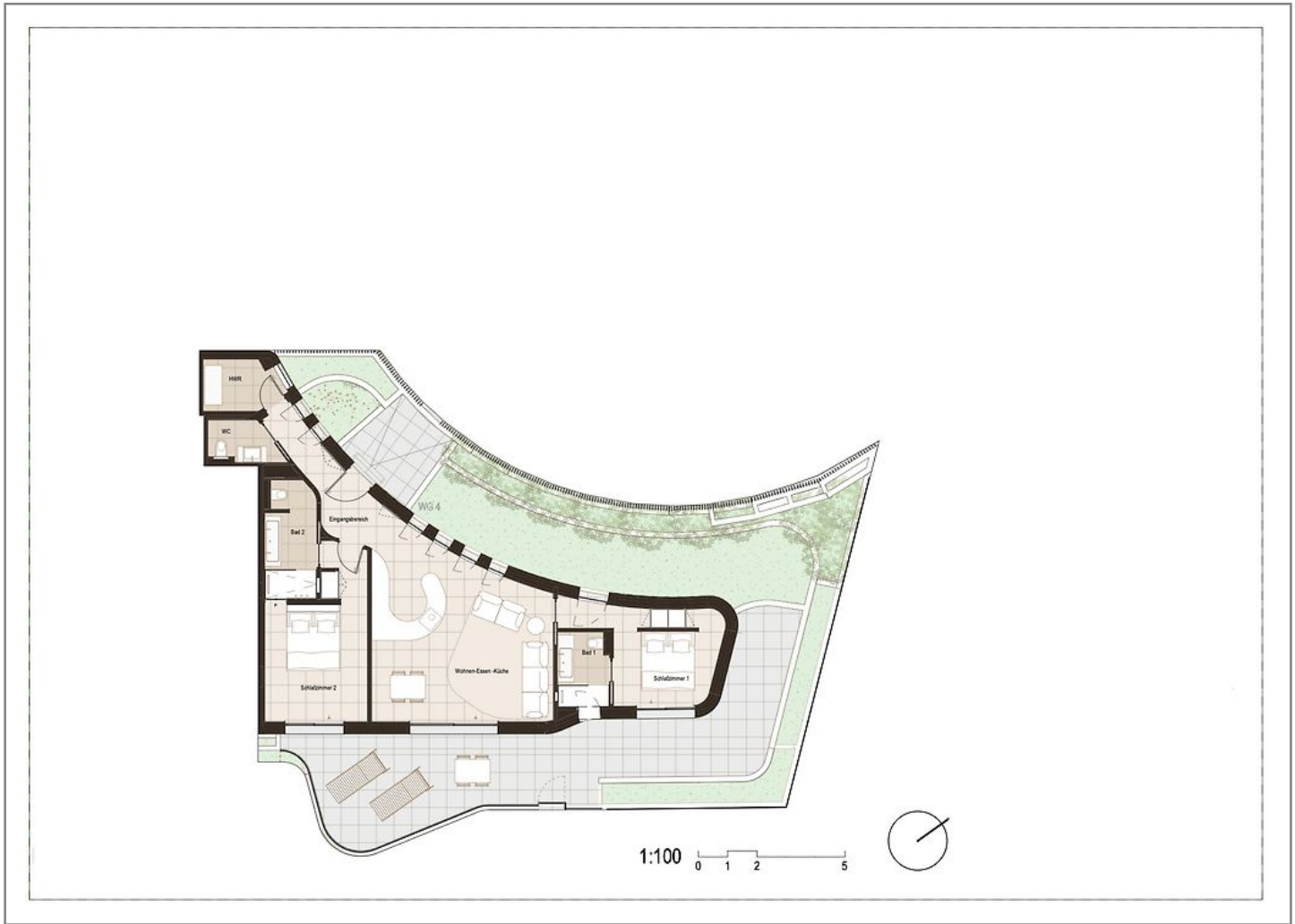
The area boasts a wide variety of restaurants, beach clubs, services and entertainment options, making it an ideal environment both for

year-round living and for seasonal enjoyment. At the same time, it offers peaceful residential areas, modern developments and high-end properties with sea views.

Perfect for those seeking a life by the sea with every service at hand and in a cosmopolitan setting. An excellent choice as a primary residence, a second home, or an investment in one of Ibiza's most exclusive locations.







Floor Plan

# Important Notice

In compliance with the current Personal Data Protection Law, we inform you that your personal data were included in an automated file owned by Engel & Völkers Ibiza, S.L., with CIF B57138182 and fiscal address at Avda. Santa Eulalia, 17 bajos, 07800 Ibiza, Spain, to attend to the commitments derived from the relationship between the two parties. Engel & Völkers Ibiza, S.L. informs that all data will be handled lawfully, loyally transparently, appropriately, suitably, with restrictions, precisely and kept up to date. You may exercise your right to access, rectify, limit treatment, supress, withdraw and oppose to your personal data treatment, as well as the consent provided for its treatment by sending your request by email to [Ibiza@engelvoelkers.com](mailto:Ibiza@engelvoelkers.com).

